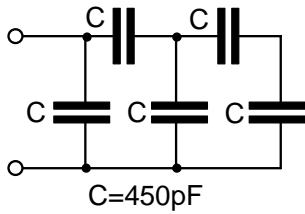
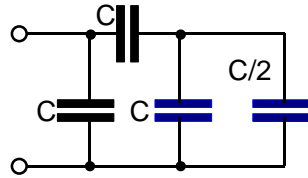


Lösung Aufgabe E16: Gesucht jeweils Gesamtkapazität C_{ges} :

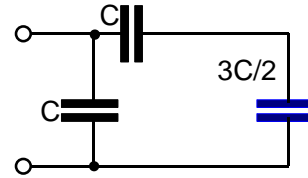
a)



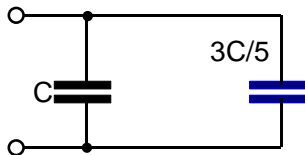
1. Zusammenfassung liefert wegen Reihenschaltung zweier gleicher Kondensatoren:



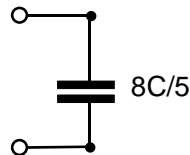
2. Zusammenfassung wg. Parallelschaltung zweier Kondensatoren:



3. Nun Reihenschaltung zweier Kondensatoren:

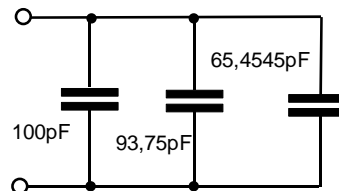
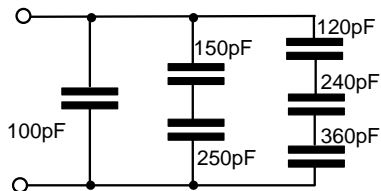


4. Nun Parallelschaltung zweier Kondensatoren:



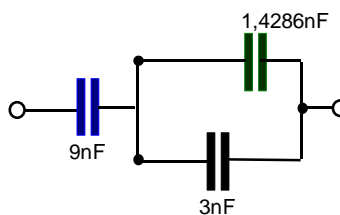
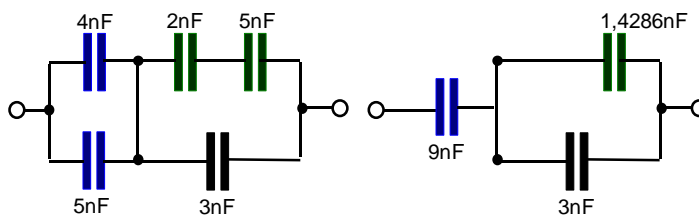
$C_{\text{ges}} = 1,6 C = 720 \text{ pF}$

b)



$C_{\text{ges}} = 259,205 \text{ pF}$

c)



$C_{\text{ges}} = 2,968 \text{ nF}$